



العصرية للتجارة و الخدمات الفنية
El Masria for Trade & Tech. services



Machine Comparison

Steel Beam

SUB-JET



Pure steel beam

1. Steel Beam has good stability and can maintain its shape without deformation for a long time.
2. Double rows of high-speed linear guide rails, high-speed and silent, anti-shake and anti-shock.
3. Due to thermal expansion and contraction, the machine has no precision changes, low loss, and high precision.



Others



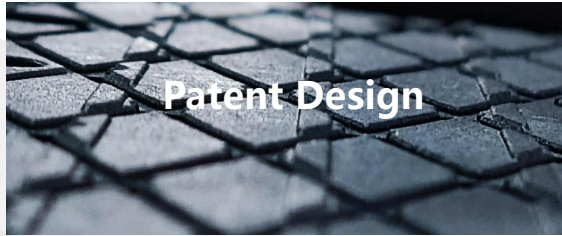
Aluminum alloy beam

1. Most of other manufacturers are made of aluminum alloy and other materials, which are prone to thermal expansion and contraction, causing deformation. Resulting in inaccurate accuracy and easy change.
2. Noisy, low stability, and inaccurate.

Printing Platform



SUB-JET



Patent Speical Material Printing Platform

1. Adsorb the transfer paper smoothly and avoid wrinkles during the printing process.
2. Completely solve the problem of irregular printing paper arching and wrinkles. Improved unattended security and stability.
3. Further improves the coverage of difficult and demanding patterns.

Others



Normal flat aluminium platform

Other manufacturers apply with normal flat aluminium platform, or imitation our plastic high and low platform. Easily paper wrinkle when printing dark color patterns with thin paper

Ink Supply System



SUB-JET



Patent Ink hub + positive pressure system

1. Our own patented "Ink hub design" and buffer channel design at the front of the damper reduce unnecessary ink tubes. The structure is simple, easy to maintain, reduces the weight of the carriage, and improves accuracy.
2. The height-difference positive pressure system effectively prevents backflow of ink and ensures sufficient ink supply when printing long and dark color images.

Others



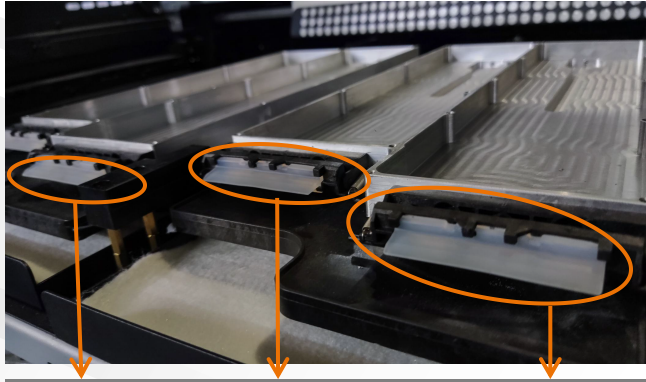
Secondly ink system negative pressure system

1. **Secondly ink system:** no buffer flow channel design, and too many ink tube harnesses. Maintenance is complex and cumbersome. Only applicable on low speed machine < 12 Head
2. The current negative pressure system in the market is not mature, and there will be problems with backflow and ink leakage at any time, which occurs frequently.

Ink Wiping System



SUB-JET



1 wiper for 1 group of printhead

Longitudinal Wiping

1. The cleaning component uses longitudinal scraping, one wiper for one group of printhead. It is not easy to accumulate ink and mix color, which facilitates later cleaning and maintenance and extends the service life of the printhead.
2. The ink stack adopts a hidden lifting design, making the structural space more concise.

Others



All printhead use one wiper

Horizontal scraping

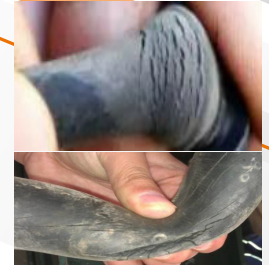
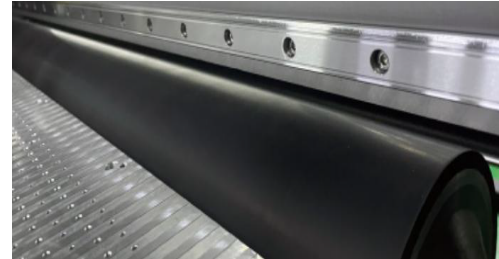
1. All printhead scrape ink horizontally at the same time, which seems simple but crude.
2. It is very easy to accumulate ink and mix color between different group of printhead, and the subsequent maintenance and cleaning costs are huge.

Feeding System

SUB-JET



Others



1. The "steel roller + Press wheel" technology is mature, durable for life and can maintain long-term paper feeding accuracy.
2. Tight pressure roller, suitable for any paper situation.
3. Low energy consumption, low electricity consumption, cost saving, energy saving and emission reduction.
4. Simple operation, easy to use, saving time and effort, improving efficiency and productivity.
5. Low maintenance cost, customers can replace/repair by themselves, saving cost, time and effort.

1. Large-area rubber material will age and deform in 2-3 years, affecting printing accuracy and service life.
2. When paper gets wet, it is easy to get crushed and wrinkled, making the paper uneven.
3. High energy & power consumption, and increased costs.
4. The operation process is complex and cumbersome, difficult to use, and inefficient, affecting productivity and capacity.
5. The maintenance cost is high, users can not replace it by themselves, and after-sales service is time-consuming and labor-intensive, which all influence normal production.

SUB-JET



3D steel frame structure

1. Three-dimensional space structure, uniform stress distribution area, high bending resistance, solid and firm.
2. It can withstand long-term high-speed operation and heavy-duty winding and unwinding systems.

Others

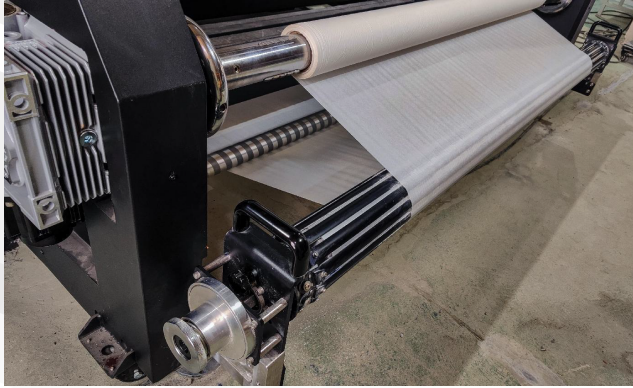


Single piece thickened steel plate

1. Thickened steel plate, single piece structure,
2. The disadvantage is that the stressed area is concentrated and it is easy to bend and deform. Not only does it affect stability, but it also affects accuracy.

Feeder & Take-up System

SUB-JET



Rubber roller

1. The rubber material has sticky grip and can accurately control paper and positioning to avoid offset and misalignment.
2. Evenly apply pressure on the surface of the paper to effectively prevent wrinkles during winding up process and ensure flatness.
3. The adsorption capacity of the rubber strip roller can increase speed, feeding & take up paper faster, and increase production.



Others

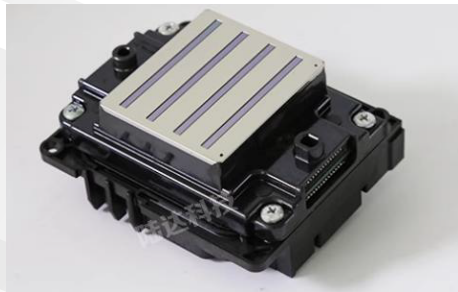


Brush roller

1. The cleaning effect is poor and impurities are easily left, causing the fibers of the brush roller to become entangled, clogged or damaged.
2. Poor adaptability and cannot adapt to different printing materials
3. The friction of the brush will cause scratches or wear on the surface of the paper, making it easily damaged.
4. Fibers of the brush roller will gradually fall off or wear out, affecting the printing quality and requiring regular replacement or maintenance.

Printhead

SUB-JET



Epson i3200

1. Provides excellent printing accuracy, precise and clear details.
2. The color range is wide, the printed images are richer, brighter and more delicate, and the application range is wider.
3. Reliable and durable, suitable for continuous printing operations, reducing breakdowns and maintenance time.
4. Very cost-effective, the market price is around CNY6,000



Others



Kyocera head

1. The printing detail processing and image clarity are slightly inferior, and the printing accuracy is limited.
2. The color range is limited, and the color saturation and color depth of the image are deficient.
3. Maintenance costs are high, and repair and replacement are relatively complicated, requiring more time and energy.
4. The price-performance ratio is not high, and the market price is around CNY20,000-30,000.