



JLD-H 高速雙面平布針織機

Double Jersey High Speed Circular Knitting Machine

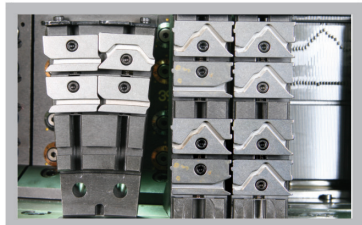


駿隆公司以多年專業織造技術及對針織布組織經驗，研發成功此高速機。

JLD-H機可生產完美無橫條的平布，又具有高速度的產量，此機速度每分鐘可達到36RPM (30"~34")。

JLD-H機已通過國際CE認證，提供客戶高品質，高速度的針織機是駿隆公司全體同仁的願望及責任。

An ideal knitting machine running at the speed in excess of 36 RPM (30"~34") for Mass Production as well as Perfect Output of Faultless Fabrics. JLD-H easily increases the Knitter's Profit by Delivering High Quality Fabric with High Production !

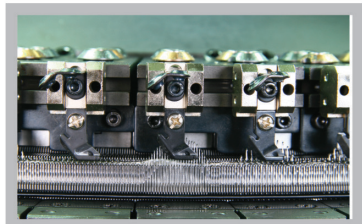


菱角及菱角座的裝置 Cam Design

菱角座與菱角的配合是以電腦繪圖程式所設計組合，再結合了CNC電腦加工機，製造出精密的菱角組合。

為達到高精度的品質，菱角及菱角座之間的配合是本公司設計人員運用3D實體的組織測試模組的展現，同時更結合了CAD/CAM電腦加工系統所製作出精密的菱角組合。

The cams, which is one of the most significantly produced part, is made of special Alloy Steel and carved by C.N.C. milling machines. Moreover, these cams are further processed by grinding and polishing along with Special Heat Treatment, ensuring that the needles run smoothly even at high speeds, and thereby also increasing the life of the Needles !



同步喂紗嘴座 Synchronized Yarn Feeding System

(專利號碼 Patent No. : 283855)

此種喂紗嘴座的設計是整組喂紗系統可同時左右調整，也可單口調整，使操作更容易，為本公司榮譽產品。

All the Yarn Feeders are installed on a Special Bracket and is Jiunn Long's favorite product which was designed for adjusting all Yarn Feeders simultaneously. However, Single Yarn Feeder Adjustment is also available, for Knitters who expect much more ! The Yarn Feeders can be adjusted in all 4 directions, right or left, forward or backward which is much more versatile and provides more convenience to the Knitters.

可織布種 Fabrics Range

雙面平布。
30" x 72F x 24G, 75/D化纖, 24小時可織200-250KGS
30/s 綿紗, 24小時可織350-400KGS
產量高將帶給客戶更大報酬及利潤。
適合客戶投資作大量生產平布的生產機台。
Double Jersey Plain Fabrics, Double Pique, Punto Di Roma Fabrics etc.,
Production: 30" x 72F x 24G, 75/D polyester yarn
200-250KGS / 24 hours ; 30/s cotton, 350-400KGS / 24 hours
Bring good benefit to the knitters by high production.
An worthiness machine for having fruitful investment.

包裝規格 Packing

外箱尺寸=長×寬×高
=2300mm×1950mm×2200mm
毛重: G.W.=2900KGS
Packing size: L x W x H = 2300mm x 1950mm x 2200mm
Weight: G.W. 2900 kgs.

規格表 Specification

尺寸規格 Size	JLD-H 30-2x2				JLD-H 34-2x2		
口數 Feeder	72F				84F		
針距 Gauge	12G	16G	18G	20G	22G	24G	28G
使用針號 Needle Number					6341,8341vo&vota		
速度 Speed	40-45RPM						
馬達 Motor	5HP						