



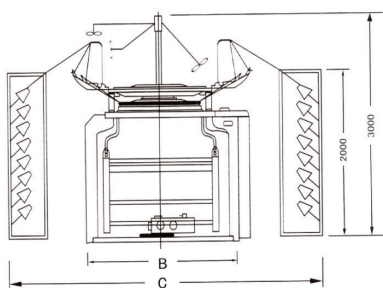
## JLD-N 雙面圓編針織機

Double Jersey Circular Knitting Machine

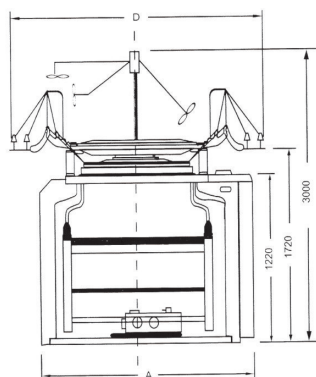
### 機器簡介 Diagnosis of JLS series

- 駿隆機械主體結構堅固耐用。
- 駿隆機器設計的菱角座為上二段下四段，若客戶購買上二段下四段機台，我們仍給菱角座為上二段下四段，方便客戶以後可另購二段菱角，織出較多變化2×4的布款。
- 機械於運轉時聲音小，速度快可達25-30RPM，例：30"~34" x 72F x 24~28G
- 下齒輪採用浸油式潤滑，不需要經常打黃油，永保齒輪不磨損，針床有自動噴油，潤滑針槽與針軌保持縫針的潤滑，上下針床有噴風設備保持針床的清潔。
- 駿隆機械的產品都是以最先進的電腦設計及製圖開發，並以最精密的機器加工，和一群優良的專業工作夥伴共同創造。
- 全系列可依客戶需求，菱角座採單一滑塊或多滑塊設計。
- 駿隆雙面萬能針織機，是利用全出針、半出針及平出針三種不同的出針菱角之變化，而生產出不同組織的布，其變化可在300種以上。此機型具有高產量和高速度的優點，使業者獲得很大利潤。
- 菱角設計採用特殊合金鋼材經由精密CNC日本電腦銑床雕刻。經加工研磨及處理，使菱角的針軌及表面光滑，於機器運轉轉速增加式，針織順暢，使針織使用壽命增加，機器轉速增加。
- 雙面機有平紋機2×2及雙面萬能機2×2，2×3，3×4機型。喂紗嘴可依客戶需求提供萬能式(鎖於上菱角座，專利號碼：283854)，或同步式(喂紗圈式，可同時調整所有喂紗嘴專利號碼：283855)。
- 本公司設計一個特殊的壓紗器，用於雙面萬能機上可織健康布款，有此零件于織健康布時不用加包紗，可織很厚，很有彈性的布身，此方式為我公司獨創。
- 依客戶需求可提供針舌撥開器、小紗嘴、健康布壓紗器、彈性紗三合一導輪等，織造特殊布樣。
- 上三段菱角座使用vo.99.50系列織針及同步喂紗圈。
- Jiunn Long Machines are built with robust structure for a longer life.
- The cam block is designed for 2 tracks on dial and 4 tracks on cylinder offered as standard equipment. It is more flexible and economic to the knitters where 2 x 2 machine is existed. As later only cams have to be purchased for knitting 2 x 4 patterned fabrics.
- Our machines are able to run upto 25 ~ 30 RPM but with lower decibel, for example, 30"~34" x 72F x 24~28G.
- No Lubrication is required for the Gears, as the same are immersed in oil bath. An automatic oil sprayer is equipped for smoothing the needle grooves and tracks. In addition, the machine is provided with an Air Blowing device which takes care of the additional cleaning requirements, especially when using Yarns like Cotton etc. All precautions are taken and necessary equipments are installed, whereby keeping the machine away from dust and abrasion.
- Jiunn Long machines are designed and manufactured by an intelligent and professional working group with the aid of CAD system and delicate machine tools.
- Single slide system or multi slide system are available, which based on knitters' requirement.
- Jiunn Long JLD-N machines are capable in knitting more than 300 kinds of Fabric Patterns by changing Knit cams, Miss cams and Tuck cams, thereby increasing the profitability of the Knitters!
- The cams, which is one of the most significantly produced part, is made of special Alloy Steel and carved by C.N.C. milling machines. Moreover, these cams are further processed by grinding and polishing along with Special Heat Treatment, ensuring that the needles run smoothly even at high speeds, and thereby also increasing the life of the Needles!
- There are 2 different models are available, interlock 2x2 and universal 2x4, 3x4. Universal type (yarn guide locked on upper cam block, patent no. 283854) or Synchronized type (synchronized yarn guide ring, adjust all yarn guides simultaneously, patent no. 283855).
- Thanks for our unique designed part, also called [Yarn pressing tool] which is used for knitting [Healthy fabrics]. It makes easier to knit the aforesaid fabrics with more thickness and elasticity without using inlay yarns.
- Based on knitters' requirement, latch opener, or minor yarn guide, or healthy fabric yarn pressure, or 3 in 1 Lycra wheel are available for knitting various patterns fabric.
- Upper 3 tracks cam block is available, using needle no. vo.99.50, and with synchronized yarn guide ring.

### 落地式紗架 Side Creel



### 頂天式紗架 Top creel



### 紗原料 Yarn Material

可使用之原料有亞麻、天然棉、天然絲、化學纖維等，又可加裝氨綸 (LYCRA) 使布料更顯現其價值。

Cotton, Silk, Polyester etc. with or without Lycra/Spandex.

### 應用 Application

織出物為雙面布，於春、秋裝中應用最廣，尤其適合用於製作童裝、少女裝、運動裝、居家服及休閒服等。

The double knitted fabrics are widely used for apparels in spring and fall, especially suitable in sports-wear and leisure wear for teenagers and ladies.

### 可織布種 Fabrics Range

萬能機，可織300多種布如下：格子布，提花布，直條布，瑞士毛巾布，健康布，泡泡布，雙層布，樓梯布，小可愛，單面羅紋布，羅紋布，羅馬布……等。

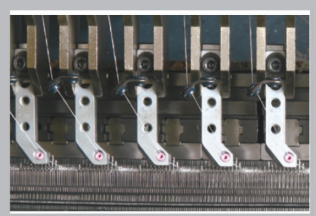
Besides Interlock and Rib Fabrics more than 300 different kinds of Fabrics with different patterns can be made on this machine, such as Brocade, Stripe, Crepe, Bubble, Double Tier, Ladder, Healthy, Rome fabrics and other Plain Fabrics with or without Lycra (Spandex) etc.

			動力 Motor	5HP
			速度 Speed	25RPM-30RPM
A	2270	2420	外箱尺寸 Packing size	(1) 30"~34" LxWxH=2300x1950x2100
				(1) 36"~40" LxWxH=2750x2175x2100
B	1940	2090	毛重 Gross weight	(1) 30"~34" G.W.=3200KEGS
C	4500	4650		(1) 36"~40" G.W.=3500KEGS
D	3500	3650		



## 儲紗送紗設備 Yarn Feeding System

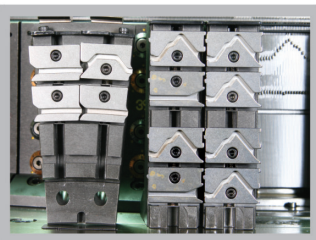
備有電子開關的儲紗設備，不易停機，不易斷紗，使布面更平滑，提高生產量。  
Positive feeder equipment with sensor switch, easy operation, makes fabric neatly and high production.



## 同步喂紗嘴座 Synchronized Yarn Feeder (專利號碼 Patent No. : 283855)

此種喂紗嘴座的設計是使整組喂紗系統可同時左右調整，也可單口調整，使操作更容易，為本公司的榮譽產品。

The bracket set is our another favorite product which designed for adjusting all yarn feeding system in the same time, and single feeder adjustment is also available. 4 directions of adjustment, right and left, forward and backward which provides more convenience to set up position of yarn feeders.



## 四段菱角 Dial & Cylinder Cam Blocks.

精密的組合設計，菱角座為上三段下四段，為一機多用途的設計，可換裝菱角座36F，織出12G以下的粗針組織。下針筒經特殊設計，可作二段針與四段針的互換功能，使生產成本降低，不浪費，針軌各段分開方式，調整菱角時可獨立調整，使織物更平滑更具有彈性，組織變化範圍廣。

The cam block is designed for 3 tracks on Dial and 4 tracks on Cylinder, thereby increasing the multiple functions for this machine. The Cam block of a 72 Feeder Machine can be changed to 36 Feeder, for knitting thicker fabrics in courser gauges lesser than 12 gauge. Special design in Cylinder, which is able to convert into 2 tracks or 4 tracks, thus offering the knitters with maximum profitability !

## 規格表 Specification

### JLD-N 雙面機

針筒直徑 Dia.	針距 Gauge	喂紗口數 Feeder 萬能機 Universal
JLD30	12G	60F,72F
JLD32		64F,72F
JLD34		68F,72F,84F
JLD36	32G	72F,84F
JLD38		72F,88F
JLD40		84F

### JLR 羅紋針織機

針筒直徑 Dia.	針距 Gauge	針織編號	喂紗口數 Feeder
JLR30	12G	2G-14G 7450VO	54F,60F,72F
JLR32	32G	16G-22G 7450VO	
JLR34		24G-28G 7441VO	

### 雙面機

JLD-N1 24	
寸數	28"~36"
口數	同方能機JLD-N
針數	18G~28G
針號	18G~28G 76.50 G02 18G~28G 76.41 G08 針舌7.5mm

## 新型電子式控制面板 New Electronic Control Panel

比傳統控制面板敏銳，可監督機器之異常狀況及計數各項相關書記，以便利工作人員掌握生產最佳狀況及速度（RPM），以保護機台運轉之正常。

The New Electronic Control Panel is much more sensitive than traditional control panels, and can supervise abnormal status of the machine, and also show different related datas. The Production Status and Speed (RPM), can be monitored and also adjusted in order to keep the machine in best running conditions.



## 機器織布生產量 production

24小時可生產200.至250公斤的布。  
Approximately 200 ~ 250 kgs / 24 hours.

## 用針編號 Needle Number

2x2 18G-22G VO, VOTA 7450G09  
2x2 24G-28G VO, VOTA 7441G04  
3x4 18G-22G VO, VOTA 7450G09, VO 9950 G01  
VO14050 G02, G03  
3x4 24G-28G VO, VOTA 7441G04, VO 9941 G03  
VO14041 G02, G03  
2x4 18G-22G VO, VOTA 7450G09  
VO14050 G02, G03  
2x4 24G-28G VO, VOTA 7441G04  
VO14041 G02, G03